

Application Note

DeTwo Video Performance

028

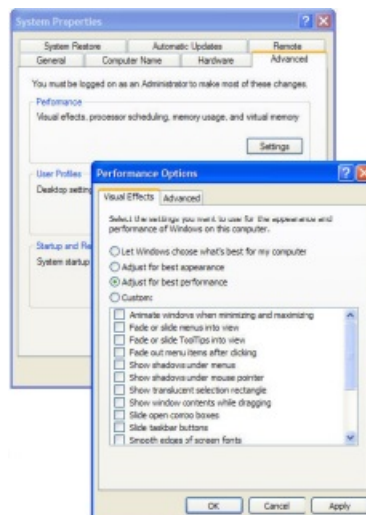
Overview

Video performance when using DeTwo products may be improved by optimizing the following settings in Windows 2000 / XP system and display properties.



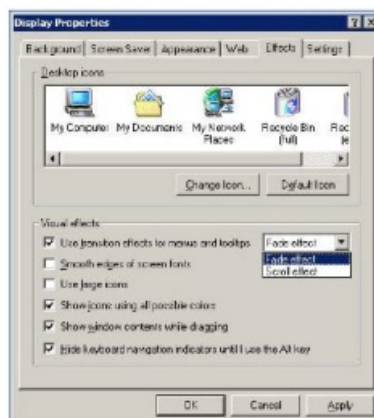
Windows® XP

1. Open the System Properties window (Start / Control Panel / System)
2. Click the *Performance Settings* button under the *Advanced* tab.
3. Under the *Visual Effects* tab, choose “Adjust for best performance” and click *Apply*.



Windows® 2000

1. Open the Display Properties window (Start / Control Panel / Display Properties)
2. Click the *Effects* tab.
3. Either choose *Fade Effect* from the “Use transition effects for menus and tooltips” option and click *Apply*. Or, deselect the option entirely.



Information in this document is subject to change. No part of this document may be reproduced through any means including (but not limited to) electronic or mechanical, without express written permission from Amulet Hotkey Ltd. Amulet Hotkey Ltd may have patents, patent applications, trademarks or copyrights or other intellectual property rights covering subject matter in this document. Other product names and company names listed within this document may be trademarks of their respective owners. © Amulet Hotkey Ltd. All rights reserved.