

Application Note

Using an Amulet Hotkey Portal in a VMware View 4 environment.

AN46

Summary

This document describes using an Amulet Hotkey Zero-Client Portal (DXR4-iP, DXR2-iP or DXR-iP) as a client in a VMware View 4™ environment. This document assumes you have a configured and working View 4 environment already set up.

Limitations

While the VMware implementation of PC-over-IP® supports four heads of video, connecting with a zero-client imposes a limitation of two heads, even on the quad-head DXR4-iP portal. This is a hardware limitation. You must enable the “Direct connection to the desktop” setting in View Manager, which means that the View server cannot proxy connections for your clients. This may affect your network architecture, particularly for external users.

Process

!Configuring the View server

Before connecting any zero-clients, you must make some changes to your View 4 server

- Log in to the View Manager (<http://view-server/admin/>)
- Select the Configuration button, and then “Servers” on the left hand menu. Select the appropriate View server from the list, then click “Edit...”
- In the View Server Settings dialogue, ensure the “Direct connection to desktop” check box is checked.
- Click OK.
- Select the Desktops and Pools button, and then for each desktop or pool you will be using with PCoIP®:
 - Select the desktop/pool and click “Edit...”
 - Click Next repeatedly until you are at the Desktop/Pool Settings page
 - Ensure the Default display protocol is set to PCoIP.
 - Ensure the maximum number of monitors is at least two. If this desktop/pool will be connected to exclusively by hardware clients, set this to two.
 - Click Finish

Configuring the clients

To configure a client to connect to a View 4 environment:

- Ensure you are at the “Connect” screen rather than connected to a host – or open the IP of the portal in your web browser.
- If you are using the local GUI, click Options (top left) and then Configuration. Click the Unlock button (bottom left of the dialogue box) and enter the administration password. The default password is “ahkdante”. If you are using the web interface, enter the password to login.
- If you are using the local GUI, click the “VMware View” tab. If you are using the web interface, point to “Configuration” on the menu bar and then click “VMware View”.
- Turn on the “Enable VMware View” checkbox.
- Enter the IP or hostname of your View 4 server.
- Enter the port for your View 4 server if it is different from the default.
- Enable SSL if you wish to use it (recommended).
- Enable auto-connect if you do not wish the user to have to press the Connect button.
- Click OK (or Apply, on the web interface) to save changes.

The portal must be power-cycled for the new settings to take effect. Once restarted, you will be presented with a VMware View-branded connection screen. You should be able to connect, authenticate, and select a desktop session to connect to.

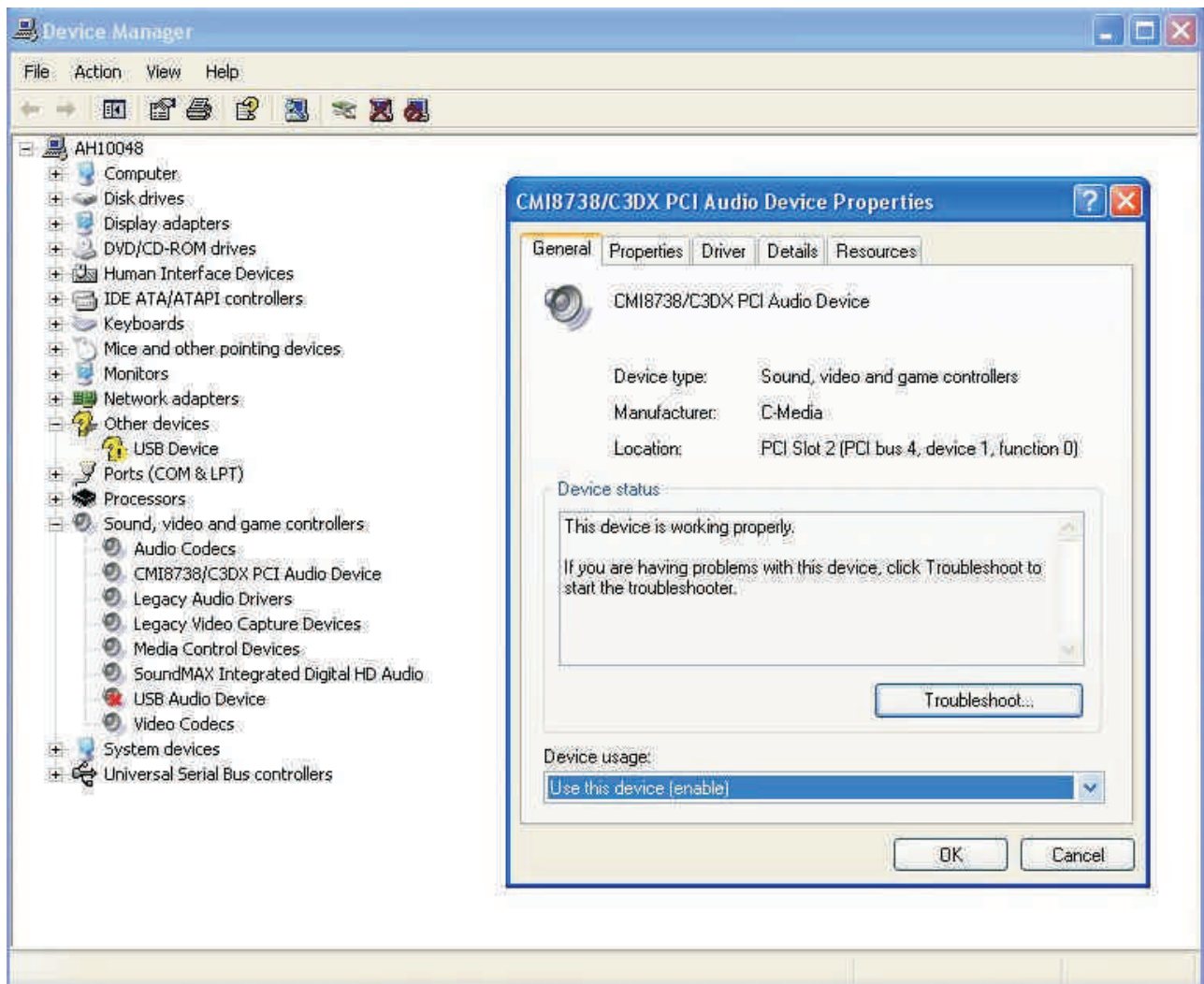
Procedure continued..

This is the audio device located on the Bloomberg keyboard. Please Disable this.

6. There is a built in audio device on the DeTwo. This should appear in Device Manager as 'CMI8738/C3DX PCI Audio Device, (shown below). If this is not present, the drivers may not be installed for it.

Please download and install these drivers from http://www.amulethotkey.com/support/support_d2.htm

Installation of the CMedia audio drivers will involve rebooting the PC. If you can see this device in Device Manager, but it has a red cross through the icon, it has been previously disabled. If so, please right click on it, and Enable.



7. If you now connect speakers / headphones to the audio out jack on the DeTwo receiver, you should be able to hear audio if some is played. If you cannot hear any audio, go to Control Panel\Sounds and Audio Devices. Click the Audio tab, and change the drop down menu for the 'Sound Playback' and 'Sound Recording' options to 'C-Media Wave Device', click Apply, and OK. If these are already configured correctly yet you still cannot here any audio, ensure you are using the correct audio connection on the DeTwo and check the volume levels.