

Quick Start Guide

Create seamless workspaces with MousePoint® - the latest in KVM switching technology from Amulet Hotkey. Shift the focus of keyboard and mouse data easily between monitors and workstations with no need for hot-key or button combinations.

MousePoint is easy to use, allowing you to focus on the task in hand without noticing there is a KVM switch between you and your workstations and PCs.

This Quick Start Guide tells you how to install and configure the MousePoint software on your workstations or PCs.

Installation

Install the MousePoint software onto all the PCs connected to the KVM switch.

1. Download the latest MousePoint software from the Amulet Hotkey [Resources](#) website.
2. Install the software on one workstation or PC.
3. Once the software is installed, restart the system.

After the restart, the MousePoint icon shows in the System tray. See [Figure 1](#).



Figure 1: Amulet Hotkey launch icon for the MousePoint application

4. Repeat steps 2 and 3 for each PC connected to the KVM switch.

Start the MousePoint Configuration application

After the installation is complete, use the MousePoint Configuration application to configure MousePoint on just one of the PCs connected to the KVM switch.

1. Right-click on the Amulet Hotkey MousePoint icon in the Taskbar (see [Figure 1](#)) to launch the MousePoint configuration application.

The MousePoint application menu appears. See [Figure 2](#).

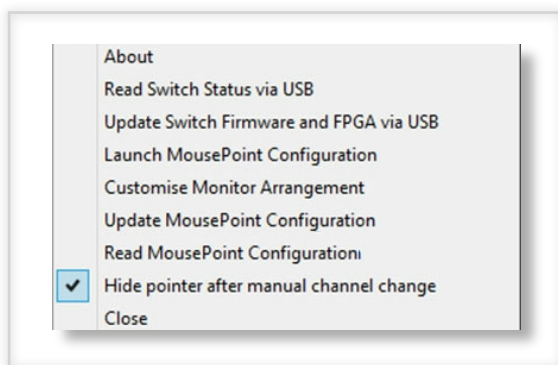


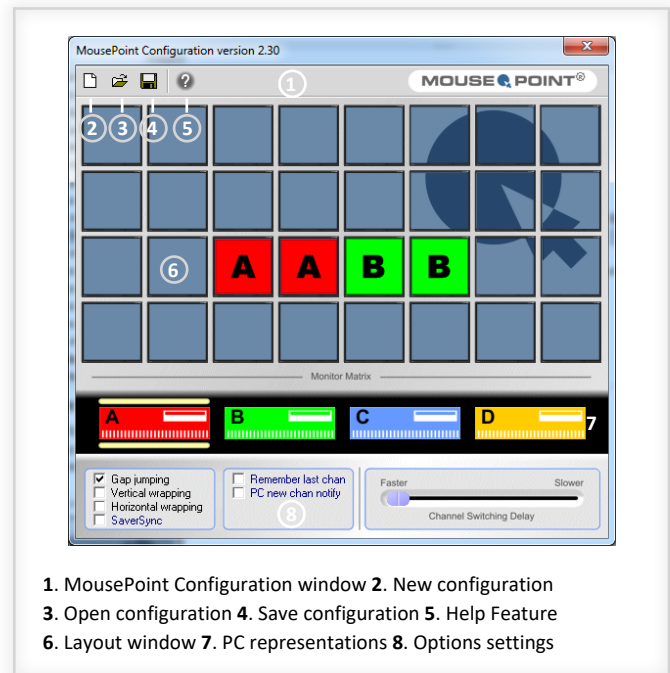
Figure 2: MousePoint application menu

Note: You can also launch the application from the Start menu, just look for the Amulet Hotkey folder.

2. Select **Launch MousePoint Configuration**.

This opens the MousePoint Configuration window. See [Figure 3](#).

MOUSE POINT®



1. MousePoint Configuration window
2. New configuration
3. Open configuration
4. Save configuration
5. Help Feature
6. Layout window
7. PC representations
8. Options settings

Figure 3: MousePoint Configuration window

Configure your setup

Use the MousePoint Configuration window to build a graphical description of your desktop set-up. Refer to [Figure 3](#).

1. Click on a PC representation A, B, C or D - see item (7).
Yellow bars appear around the PC representation when it is selected.
2. Click on a monitor tile in the layout window (6) and drag to show the number and orientation of the monitors connected to that PC.
3. Click on the next PC representation and select the monitor layout for that PC.
4. Repeat step 3 for all PCs connected to the KVM switch.
5. Click on the Save icon (4) and save your configuration (a '*.k4c' file).
6. Close the MousePoint Configuration window.
7. Right-click on the MousePoint System tray icon and select **Update MousePoint Configuration** from the menu. See [Figure 2](#).
The configuration file uploads onto the KVM switch.

Installation complete

After MousePoint is installed and configured, you can move between your workstations by moving the cursor off the edge of the desktop. The MousePoint software will automatically change the focus to the next workstation.

Active workstation

You can tell which workstation is currently active by the channel lit on the front of the KVM switch. In addition, the MousePoint icon on the active workstation will change from grey to green in the System tray. See [Figure 4](#).



Figure 4: Active workstation icon

Quick Start Guide

Application menu features

This section describes the additional features of MousePoint accessible from the application menu (right-click on the icon in the System tray). Refer to [Figure 2](#).

- **About** - Gives details about the current version of MousePoint installed.
 - **Read Switch Status via USB** - Easily gather information on DIP switch settings and other information about the KVM switch. See [Figure 5](#).
 - **Update Switch Firmware and FPGA via USB** - Use this command to update the firmware in the KVM switch.
- Note:** If the KVM switch has firmware from before 2013, you must upgrade to the most recent firmware via serial cable, before this option works.
- **Launch MousePoint Configuration** - Opens the configuration window to create a seamless workspace for multiple PCs and monitors.
 - **Customise Monitor Arrangement** - Advanced feature for creating complex workspace configurations.
- Note:** It is best to only use this feature with help from Technical Support for complex screen configurations not available from the configuration window.
- **Update MousePoint Configuration** - Install a saved workspace configuration onto the KVM switch to implement the workspace.
 - **Read MousePoint Configuration** - Upload a saved configuration from the KVM switch.
 - **Hide pointer after manual channel change** - This is selected as default and hides the non-active mouse cursors on the inactive PCs or workstations.
 - **Close** - Ends the K4uTrayApp process and stops MousePoint.

- **Gap jumping** - Move seamlessly between screens when a PC is turned off.
- **Vertical wrapping** - Allows you to move between the topmost screen in a setup and the lowest screen once the cursor leaves the edge of the screen.
- **Horizontal wrapping** - Allows you to move between the rightmost screen in a setup and the leftmost screen once the cursor leaves the edge of the screen.
- **SaverSync** - Sends out a signal to keep all idle PCs out of sleep mode while at least one PC is active with keyboard or mouse activity.
- **Remember last chan** - This option will make the KVM switch default to the last active channel, rather than Channel 1 which is the default option.
- **PC new chan notify** - Sends out a message via the serial port when the KVM switch changes channels to notify an external source of the channel change.

Channel Switching Delay

This function allows you to control the speed at which MousePoint changes channels. Move the slider from left to right to alter the Delay. See [Figure 7](#).

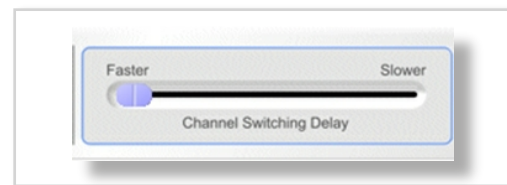


Figure 7: Channel Switching Delay

Access the Help feature

For more information on how to use this application, click on the Help icon.

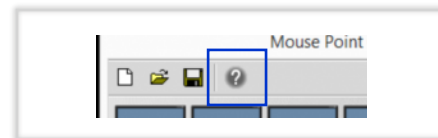


Figure 8: The Help icon

To uninstall the MousePoint application

1. Select **All Programs** from the Windows Start menu.
2. Select the Amulet Hotkey folder from the list.
3. Click on the Uninstall icon and follow the onscreen prompts.

Technical Support

Europe: eurosupport@amulethotkey.com
N America: ussupport@amulethotkey.com
S America: latamsupport@amulethotkey.com
Asia Pacific: apsupport@amulethotkey.com

More product documentation and downloads are available here

<http://resources.amulethotkey.com/resources>

Refer all servicing to qualified personnel.

For further information on this product, for other contact details, or for details of our other products, see our website www.amulethotkey.com.

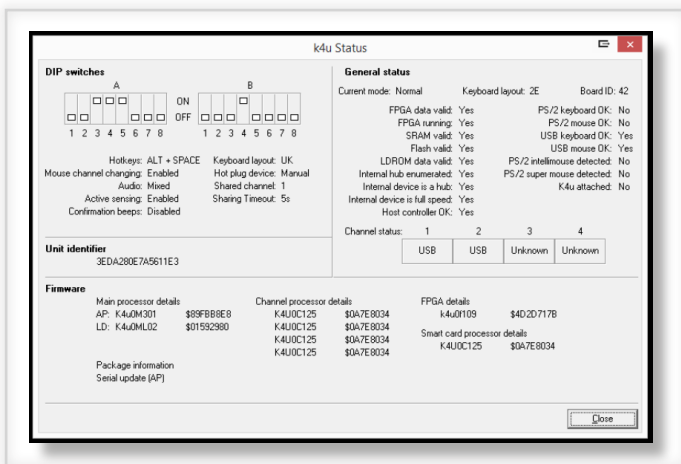


Figure 5: Read Switch Status screen

Additional options

There are additional features of MousePoint that you can access by selecting the check boxes at the bottom of the configuration window. See [Figure 6](#).



Figure 6: Selectable options in the MousePoint Configuration window

©2018 Amulet Hotkey Ltd. All rights reserved. Information in this document is subject to change. No part of this document may be reproduced through any means including (but not limited to) electronic or mechanical, without express written permission from Amulet Hotkey Ltd. Amulet Hotkey Ltd may have patents, patent applications, trademarks or copyrights or other intellectual property rights covering subject matter in this document. PC-over-IP, PCoIP and the PCoIP logo are registered trademarks of Teradici Corp. Amulet Hotkey and MousePoint® are registered trademarks of Amulet Hotkey Ltd. Other product names and company names listed within this document may be trademarks of their respective owners.