



MousePoint®
Seamless Workspaces

Datasheet

Create seamless workspaces with MousePoint® automatic KVM Switching technology.

MousePoint® is easy to use and allows you to focus on the task in hand without even noticing that your workspace is driven by multiple computers. MousePoint® shifts the keyboard and mouse data seamlessly between monitors and computers, with no need for hot-key or button combinations.

Secure access to any workstation or virtual desktop

While the K4u+ with MousePoint can be connected to local computers, highly flexible workspaces can be created when used with Amulet Hotkey KVM Extenders and zero clients. This allows the integration of centralized workstations and virtual desktops where the functionality can be defined with the click of a button.

Organizations can improve productivity and performance for advanced workflows with automatic channel switching and simultaneous viewing of applications across all host computers. This includes workspaces for:

- **Government:** where computers can be on different security level networks.
- **Command & Control:** where the computers may be from different nations, agencies or organizations.
- **Media suite:** combine different media and editing workstations based on the production phase or the team using the suite.



Move the mouse freely from one monitor to the next and the MousePoint aware K4u+ KVM switch will automatically switch channels.

Key Features

- Create large workspaces for advanced workflows with multiple host computers and complex screen arrangements
- Improve critical analysis and decision-making by helping users manage a lot of information very quickly
- Increase productivity by simultaneously viewing/managing multiple workflow stages
- Boost performance with multiple host systems operating as a single workspace
- Support large and complex deployments with up to 32 monitors and up to four host computers
- Intuitive graphical programming application
- No specialised training required

Host Computer Systems

- Virtual desktop or virtual workstations using zero client or thin client access devices.
- Centralized dedicated workstations using KVM Extender Hosts or PCIe cards and zero client/thin client access devices
- Speciality computers connected using Amulet Hotkey KVM Extender Hosts
- Desk-side workstations, laptops or PCs

EMEA Sales

+44 (0)20 7960 2400

emeasales@amulethotkey.com

N America & Canada Sales

+1 212 269 9300

ussales@amulethotkey.com

LATAM Sales

latamsales@amulethotkey.com

APJ Sales

+61 409 930 884 or +65 962 67130

apsales@amulethotkey.com

Defence and Security

security@amulethotkey.com

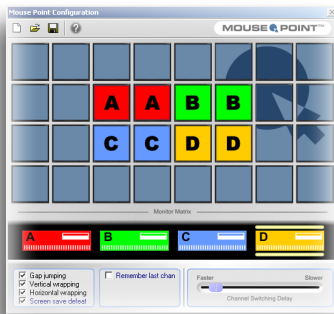
Technical Support

eurosupport@amulethotkey.com

ussupport@amulethotkey.com

latamsupport@amulethotkey.com

apsupport@amulethotkey.com



Related Products



DXZ4 Zero Client

Secure access device



KVM Extender Hosts

PCoIP KVM Extender Hosts/PCIe Cards

©2018 Amulet Hotkey Ltd (AHK). All rights reserved. Contents must not be reproduced without prior permission. Information in this document is subject to change. AHK may have patents, patent applications, trademarks, copyrights or other intellectual property rights covering subject matter in this document. AHK is a registered trademark of Amulet Hotkey Ltd. Other product names and company names listed within this document may be trademarks of their owners.

www.amulethotkey.com

MousePoint Technology Features

Automatic KVM Channel Switching

MousePoint tracks the MousePointer to automatically switch KVM channels across multiple computer systems when the mouse moves from one monitor to another.

Handles Complex Screen Arrangements

Flexibility to support advanced workflows and complex screen arrangements for up to 32 monitors driven by up to four host computer systems.

Easy-to-use Configuration Tools

Intuitive configuration utilities to customize computer screen arrangement so the K4u+ can determine when and how to switch channels.

Horizontal Wrapping

Removes the mouse boundaries on the left and right workspace edges when monitors are side-by-side. When the mouse is moved past the far left screen boundary, it will jump, or wrap-around, to the far right monitor and vice versa.

Vertical Wrapping

Removes the mouse boundaries at the top and bottom workspace edges when monitors are stacked. When the mouse is moved above the top screen boundary, it will jump, or wrap-around, to the bottom monitor and vice versa.

Programmable switch sensitivity

Users can adjust the channel switching sensitivity to avoid inadvertently changing channels when navigating the mouse near a screen boundary.

Gap jumping

When a host system is turned off, the MousePointer will automatically jump to the next active host system and skip past the inactive computer(s).

Host System OS

Support for host systems running Windows 7 and Linux operating systems.

MousePoint Configuration Utility

Point-n-click Configuration

Configure how the MousePointer changes the K4u+ channels by simply pointing and clicking to create a graphical 'monitor matrix' of the computer screen arrangement. The Customize Monitor Arrangement tool allows fine configuration for individual host systems such as 'L' or 'U' shaped monitor arrangements.

Configuration import/export

Simplify deployment and management of workspaces across an organization by creating MousePoint configuration files for each unique multi-monitor screen arrangement. This includes rapid restoration of a K4u+ configuration to support organizational disaster recovery/business continuity requirements.

Saver Sync

Ensures that all screens remain active while a user is active on any one screen. SaverSync stops inadvertent screen saver triggering while meeting organization "green" requirements for screen savers to be enabled.

Remember Last Channel

Configure the K4u+ features to remember the last active channel and which channel the K4u+ hot-plug USB port is connected after the unit is reset or power cycled.

Switch Status

Report on the current MousePoint settings, the K4u+ status and firmware details.

KVM Switch Firmware Management

Manual: User or administrator controlled K4u+ firmware update. (Can be disabled).
Scheduled: Simplify K4u+ management with updates, specifying a remote folder for the K4u+ device log files. A warning notification allows an active user to cancel the update and avoid.

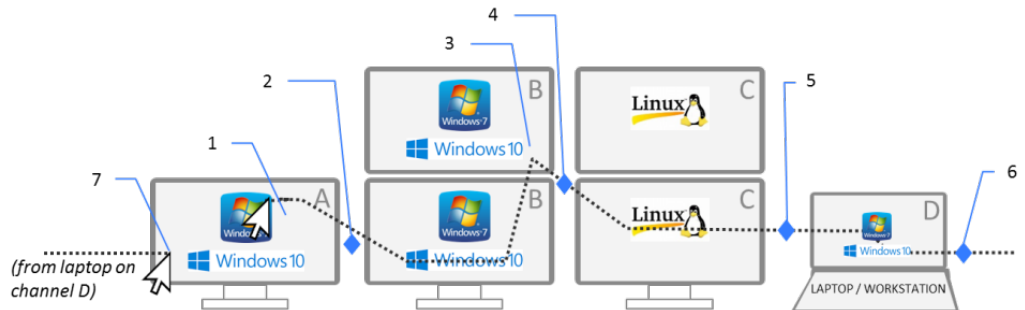
OS Support

Windows 7 64-bit or 32-bit systems. While the MousePoint Configuration utility runs on Windows, the K4u+ can support host systems running Linux when the service is installed.

Installation

Use the MousePoint Installer or the command line for scheduled or unattended installations.

Seamless Workspace Example



Moving the mouse (1) from monitor A to B, the K4u+ switches to channel B (2) where it remains even if the mouse is moved to other monitors on the same channel (3). Moving the mouse again, the K4u+ switches to channel C (4) then to channel D (5). Moving the mouse past the workspace boundary (6), the K4u+ wraps around to channel A (7).